

How to Apply

Students will gain access to the Housing Portal after submitting their "Intent to Enroll" form through WaveNet.

Once the portal is open, students will complete an application and connect with potential roommates for the academic year.

May 15

The Housing Portal opens for newly admitted students.

June 14

Deadline to submit housing applications and create roommate groups of up to 4

July 1

The Housing Office sends housing placements via email

Housing Accommodations

Students with disabilities or chronic medical conditions that require special facilities and/or accommodations may apply for accommodation through the Office of Student Accessibility.

June 3: Requests for housing accommodation through the Office of Student Accessibility (OSA) are due



Contact Us



Student Assistance Center



310.506.7586



housing@pepperdine.edu



community.pepperdine.edu/housing

Housing and Residence Life



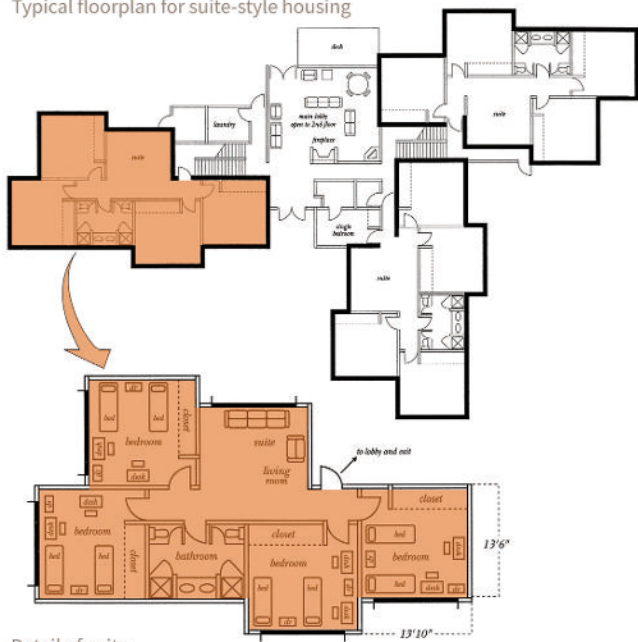
PEPPERDINE
UNIVERSITY

2024-2025 NEW STUDENT HOUSING

A community made for you.



Typical floorplan for suite-style housing



Detail of suite

Suite Style Housing Floor Plan

Each suite-style house accommodates ~50 students, with 8 students per suite in double-occupancy rooms. 2 Resident Advisors and 1 Spiritual Life Advisor live in each house with their residents.

What is provided in a suite?

- Bedroom
 - XL-Twin Bed, Dresser, Small Bookcase, Desk with Chair
 - One Microchill Unit (fridge/freezer/microwave combo) shared with a roommate
- Bathroom
 - Two Sinks, Two Showers, Two Toilets
- Common Space
 - Loveseat, Lounge Chair, Two Sofas

Room & Board Rates

Suite Style Hall

\$7,160*

Meal Plan E

\$2,270*

*price per semester

RESIDENCY REQUIREMENT

All new undergraduate students are required to live in on-campus housing and have a meal plan for their first **two academic years** as part of the University residency requirement. The only exception applies to transfer students who are required to live on-campus for the academic year, and spring transfer students who are required to live on campus for one semester.

MEAL PLAN REQUIREMENT

All new first-year students are required to have **Meal Plan E (Waves 2270)**, or higher, per semester (fall and spring). Meal points do not carry over year to year and are nonrefundable.

BUILDING COMMUNITY

Resident Advisors (RAs) develop relationships with students through everyday conversations, programming, accountability, and peer counseling. RAs lead houses in beloved traditions like the annual House Cup competition and Frosh Follies during NSO. **Spiritual Life Advisors** (SLAs) encourage spiritual growth through building relationships, caring for students, and being available to meet their needs. SLAs coordinate weekly small group Bible studies and assist in programming with their fellow RAs.



Frequently Asked Questions

Do first-year halls have AC?

Air conditioning is not provided in the halls. Students are strongly encouraged to bring fans.

Can I choose my roommate?

Yes, students may create a roommate group of up to four people in the Housing Portal. Students will have the opportunity to complete a lifestyle questionnaire that will help our software recommend compatible roommates for students to connect with.

What should I pack in preparation for my move into on-campus housing?

Students may refer to our suggested packing list located under "Student Resources" on the Pepperdine housing community website.

What student policies should I be aware of?

For more resources and information on student policies (decor, on-campus vendor services, etc.), please visit our website!