



Get membership perks you'll use every day

with CVS® CarePass®


carepass®

Carepass.com

34.03.034.1 (9/21)

A monthly
\$10
promo reward*

Pick up something, just for you. Easily use your promo reward in-store or online — it's automatically added to your ExtraCare® card each month to thank you for being a member.



Discounts on your favorite items

Get more money back in your pocket with 20% savings on thousands of CVS Health® products through your CVS ExtraCare card.** Plus, have eligible items delivered right to your door with no-cost, one- to two-day shipping on your entire order and no minimums.†

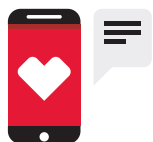
CVS
pharmacy

CVS
pharmacy

CVS
pharmacy

CVS
pharmacy

CVS
pharmacy

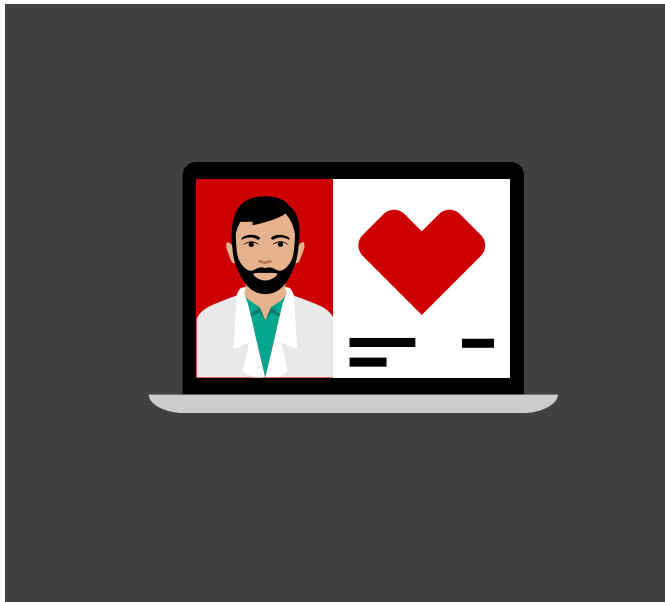


24/7 access to CVS® pharmacists

Through our pharmacist helpline, you and your loved ones can receive medication support quickly.[†] (Yep, even the 2 AM should-I-even-bother-calling kind of questions.)



When and how to register



Remember to mark your calendar so you don't miss the chance to enroll.

Beginning on your plan effective date, just log in through your **Aetna HealthSM** **app** or the **Aetna[®] member website** and follow the prompts to register for CVS[®] CarePass[®].

* FOR \$10 PROMO REWARD: May take up to 72 hours to load to ExtraCare® account. Reward expires on stated expiration date. Only redeemable in participating CVS Pharmacy® locations or online at **CVS.com**® for merchandise. Minimum \$10 purchase (excluding taxes and fees) for **CVS.com** purchases. Rewards are promotional, have no cash value and are not redeemable for cash. Promo rewards and coupons may be processed in any order. Sales tax may be charged pre-coupon. Cannot be exchanged for cash or gift card and may not be reissued or prorated for refund. Excludes alcohol, lottery, money orders, prescriptions and copays, pseudoephedrine/ephedrine products, postage stamps, prepaid cards, gift cards, newspapers and magazines, milk (where required by law or regulation), bottle deposits, bus passes, hunting and fishing licenses, any imposed governmental fees and items reimbursed by a government health plan.

** FOR 20% OFF CVS HEALTH® BRAND PRODUCTS: Excludes alcohol, prescriptions and copays, pseudoephedrine/ephedrine products, prepaid cards, gift cards and items reimbursed by a government health plan. 20% discount automatically applied to ExtraCare® card. Applies only to non-sale and non-promo items. 20% discount applies to products labeled CVS Health® or Live Better™ by CVS Health. 20% discount is not valid on other CVS® brands such as CVS Pharmacy, Beauty 360®, CVS, Gold Emblem® or Gold Emblem abound®. CVS reserves the right to apply the 20% discounts to qualifying items in any order within the transaction.

† FOR FREE 1- to 2-DAY SHIPPING: Shipping benefits depend on inventory availability, order deadlines and shipping address. Shipping is FREE when at least one CarePass®-eligible item is added to an online basket. CarePass FREE shipping badge will be displayed on each CarePass-eligible item. Certain items are ineligible for FREE shipping due to size, weight or shipping characteristics (e.g., hazmat or large cube items) and may be excluded. Special product, order, handling fees and/or taxes may still apply. Order cutoff times apply. Delivery of nonprescription items benefit does not include delivery from third-party services like Instacart®.

‡ FOR 24/7 PHARMACIST HELPLINE: Not available in all locations.

Aetna® and CVS Pharmacy are part of the CVS Health family of companies.

The 20% savings is restricted to items purchased for the member, spouse or dependents. Excludes prescriptions, alcohol, tobacco, lottery tickets, postage stamps, gift cards, money orders, prepaid cards and photofinishing and are not valid on other items reimbursed by a governmental program.