

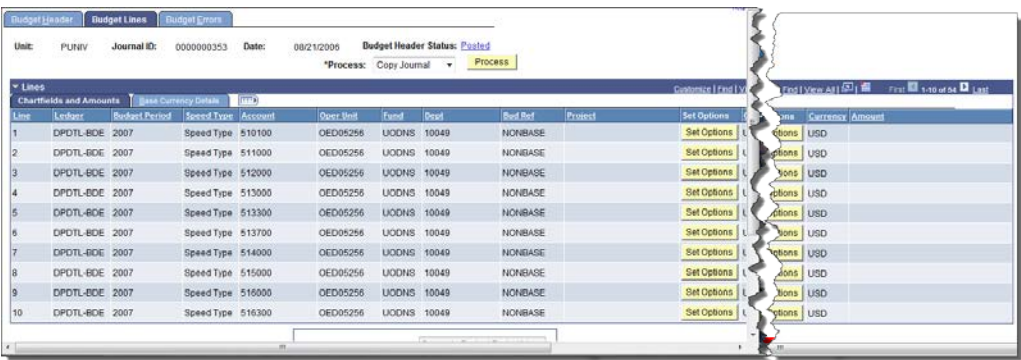
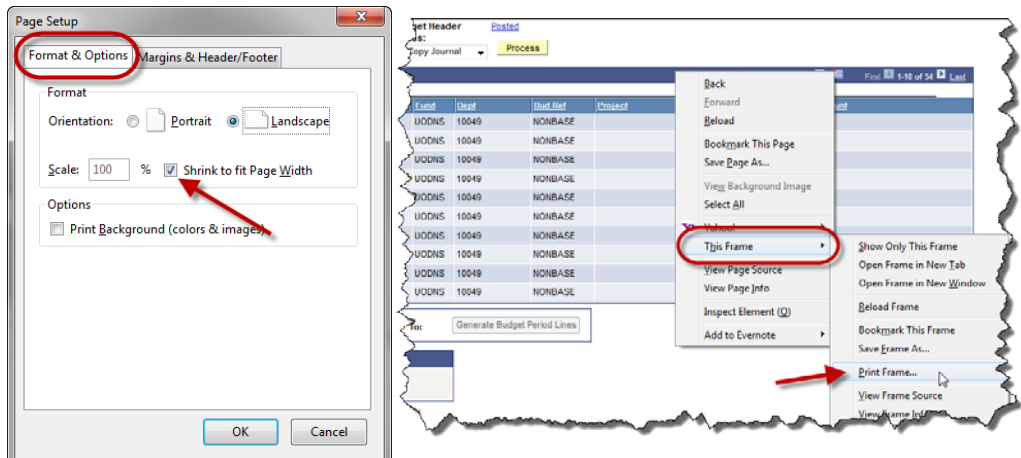
Quick-Guide

How to Print Web Pages with Scrollable Frames in WaveNet

Purpose: Instructions in how to print web pages with scrollable frames for reports, queries or spreadsheet like data within WaveNet using any of the recommended browsers: Mozilla FireFox; Safari or Internet Explorer.

Note: Please see www.wavenet.Pepperdine.edu for the list of supported browsers.

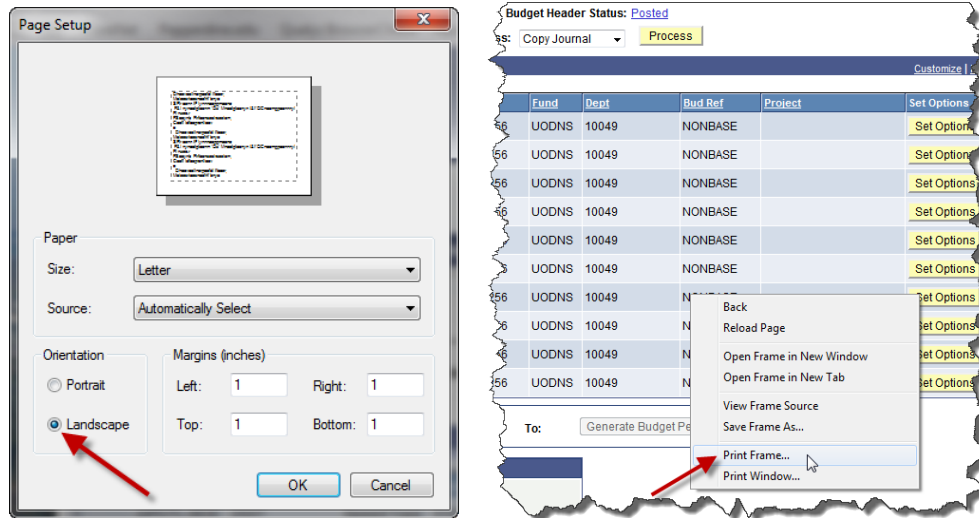
These instructions will be current for the browser at the time they were written.

#	Illustration:	Description:
1.	 <p>(Note: the horizontal scroll bar is necessary to view all fields of this report, follow these instructions to <u>print</u> the full view of a extra wide frame.)</p>	<p>The new WaveNet portal frame design allows the user to easily view widescreen reports, queries or spreadsheet like data with the use of horizontal scroll bars within any of the three recommended web browsers.</p> <p>In order to print the full view of these scrollable frames follow the instructions for the type of Web Browser you use:</p> <p>Please note, by not following these instructions your printed data may end up being truncated on the print document.</p>
2.		<h3>Mozilla FireFox</h3> <ol style="list-style-type: none"> To print a Frame with widescreen data in FireFox, select the Page Setup (in the Format & Options tab) under the FireFox File menu and insure the Shrink to fit Page Width check box is checked. Inside the Frame to be printed select and hold down the right mouse button to locate and select (in the menu list) This Frame ► and move the mouse over the expansion arrow to view the sub-menu and locate and select Print Frame... <p>The above action opens the browsers print panel allowing you to select your Printer, Print range, Number of copies etc.</p> <ol style="list-style-type: none"> In the Print panel select OK to print the full view of your selected data.

Quick-Guide

How to Print Web Pages with Scrollable Frames in WaveNet

3.



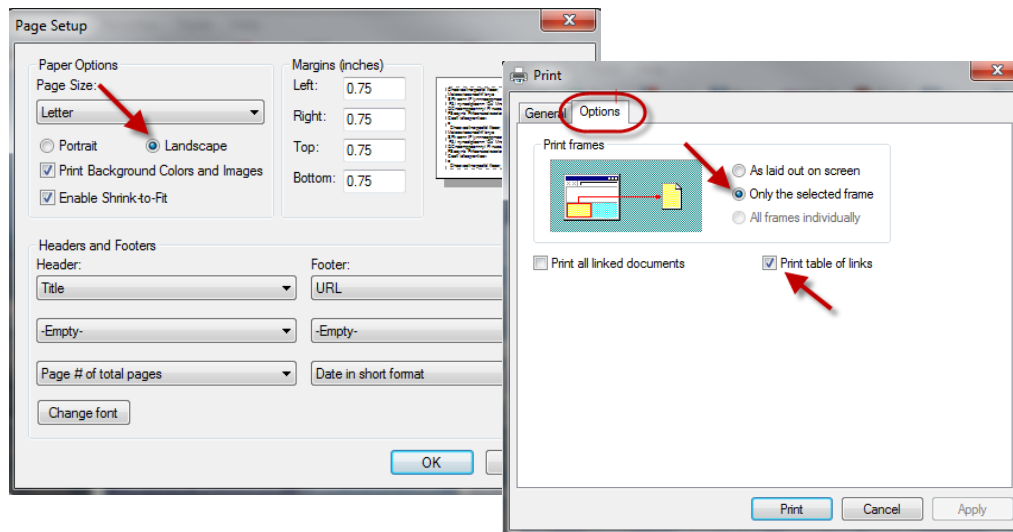
Apple Safari

1. To print a Frame with widescreen data in Safari, select the Page Setup under the Safari File menu and select the **Landscape** view.
2. Inside the Frame to be printed select and hold down the right mouse button to locate and select **Print Frame...**

The above action opens the browser's Print panel allowing you to select your Printer, Print range, Number of copies etc.

3. In the Print panel select **OK** to print the full view of your selected data.

4.



Internet Explorer

1. To print a Frame with widescreen data in Internet Explorer, select the Page Setup under the IE File menu and select the **Landscape** view and select OK.
2. In the File menu select Print... (or use Ctrl + P) to open the Print panel. Select the **Options** tab.
3. In the Options, select **Only the selected frame**, then check the box to **Print table of links**.
4. Select the **Print** button to print the full view of your selected data.

Note: that this print selection will print an additional page of internet address links, this last page can be ignored. Simply select the print range to omit the last page containing link information.