

Pepperdine download page for Windows CUPC 8.5:

<http://community.pepperdine.edu/it/services/phone/cisco/cupcwininstall.htm>

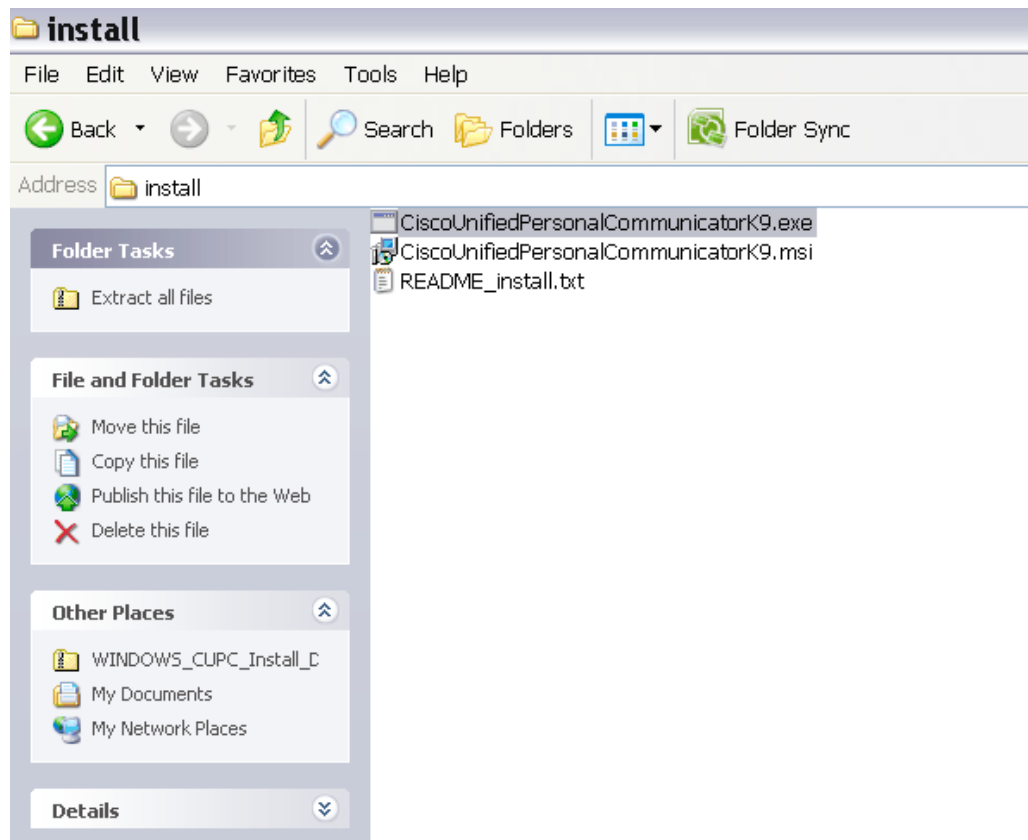
After December 18th, 2011, our current client version of CUPC for Windows will be replaced by CUPC version 8.5. The previous version of CUPC version 7.1 may still work for some clients.

The new version of CUPC, version 8.5, is compatible with: Windows 7 Professional, Enterprise or Ultimate, (32 and 64 bit) and Windows XP (32-bit only) with SP3 & DirectX 9.0c.

The installation steps below are for Windows XP but should be similar for Windows 7.

To install Windows CUPC:

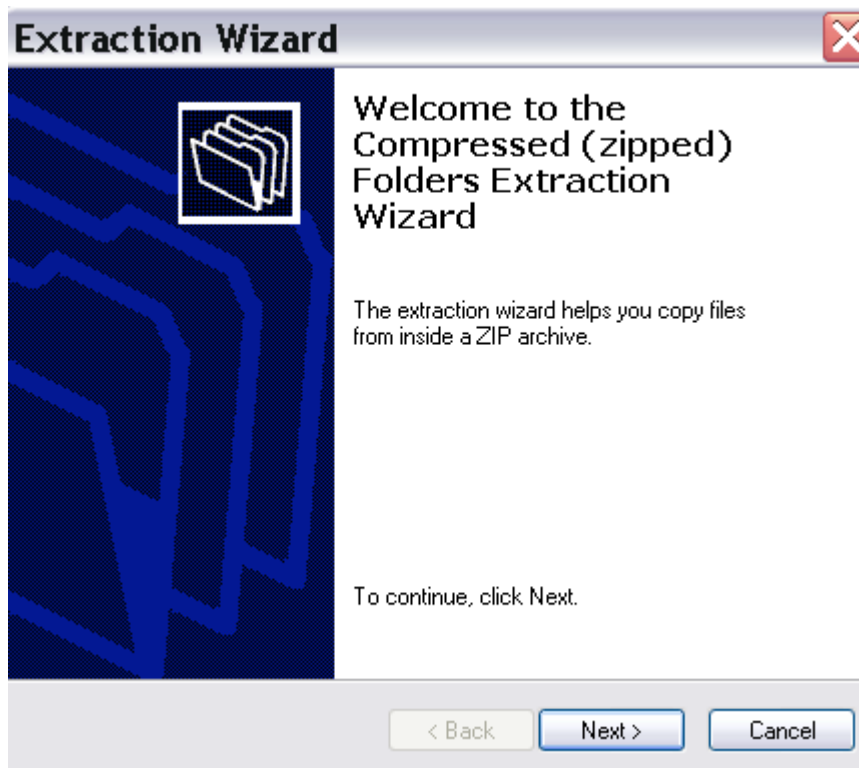
1. Uninstall all previous versions of CUPC.
2. Please close all other applications including Outlook and MS Word.
3. Download and install the new CUPC client by clicking here: [CUPC installation file](#).
4. After unzipping the downloaded package, double-click on the install folder (there may be a slight delay, please wait).
5. You will see three files. Please double-click on the .exe file:



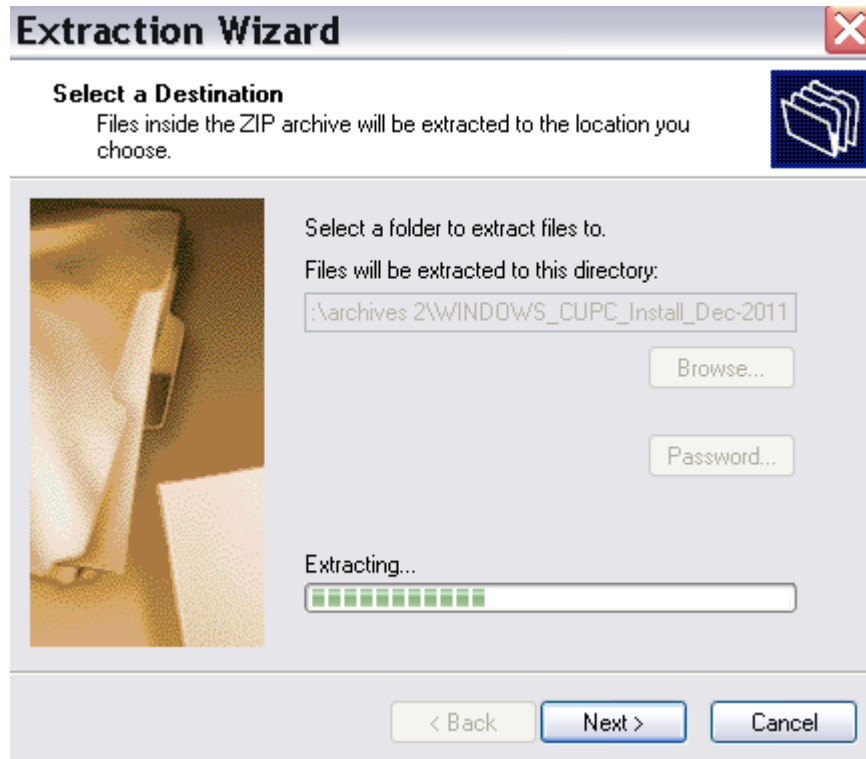
- At the “Compressed (zipped) Folders” pop-up window, please click on “extract all.”



- At the Extraction Wizard Welcome window, please click on Next.



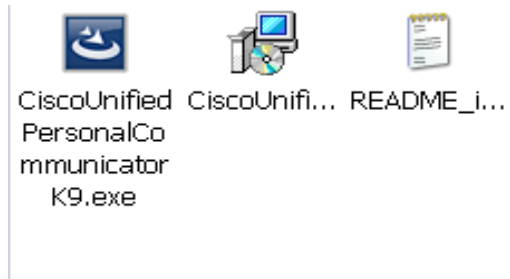
8. At the second Extraction window, please click Next and wait for the files to fully extract.



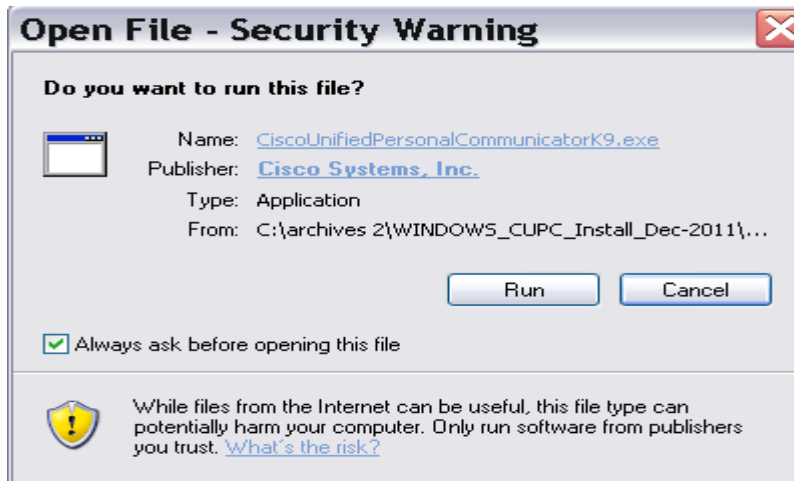
9. At the final extraction window, please click finish:



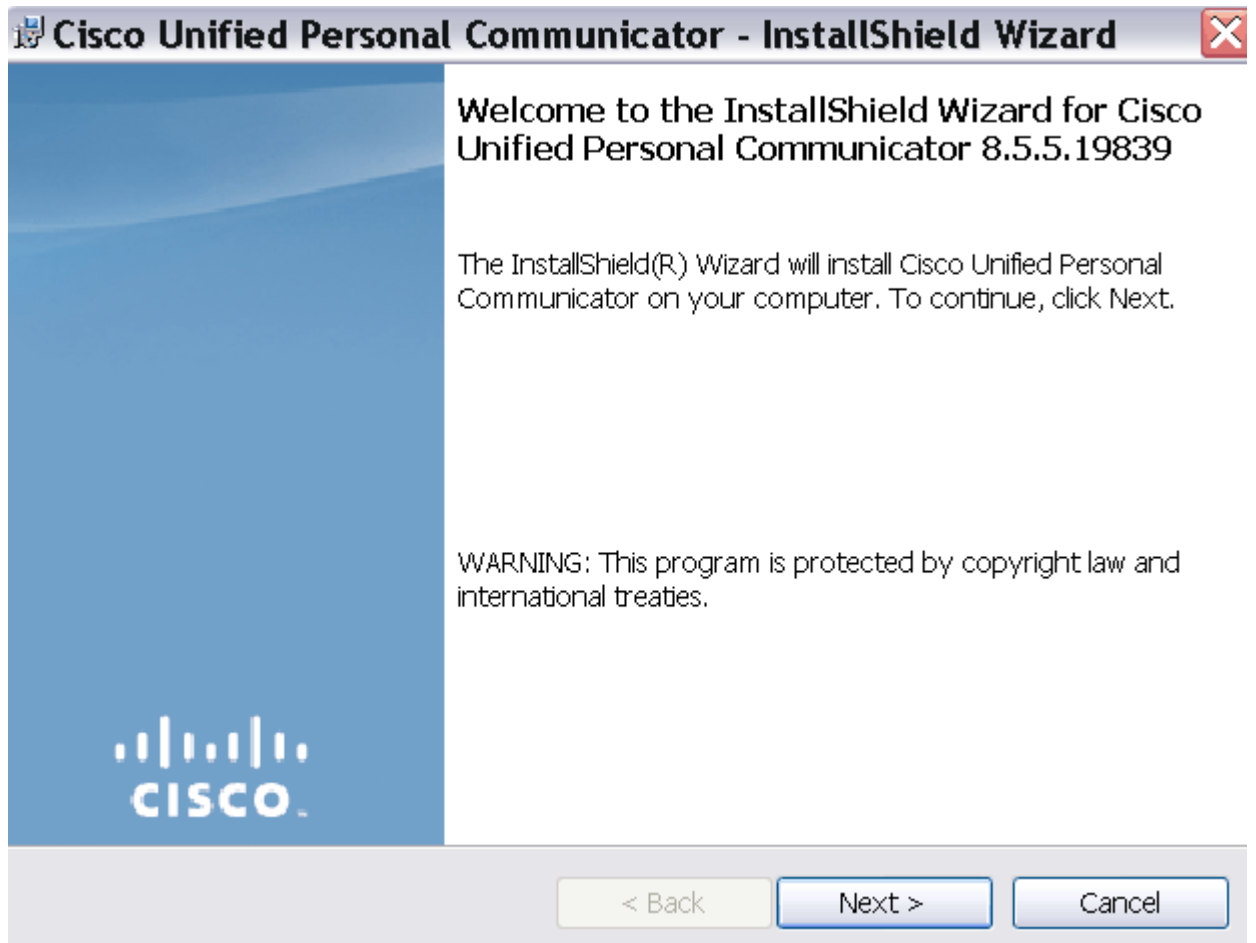
10. After extraction, the 3 CUPC files will look like this. Please double click on the dark blue .exe file:



11. At the security warning, please click on run.



12. At the InstallShield Wizard, please click Next.



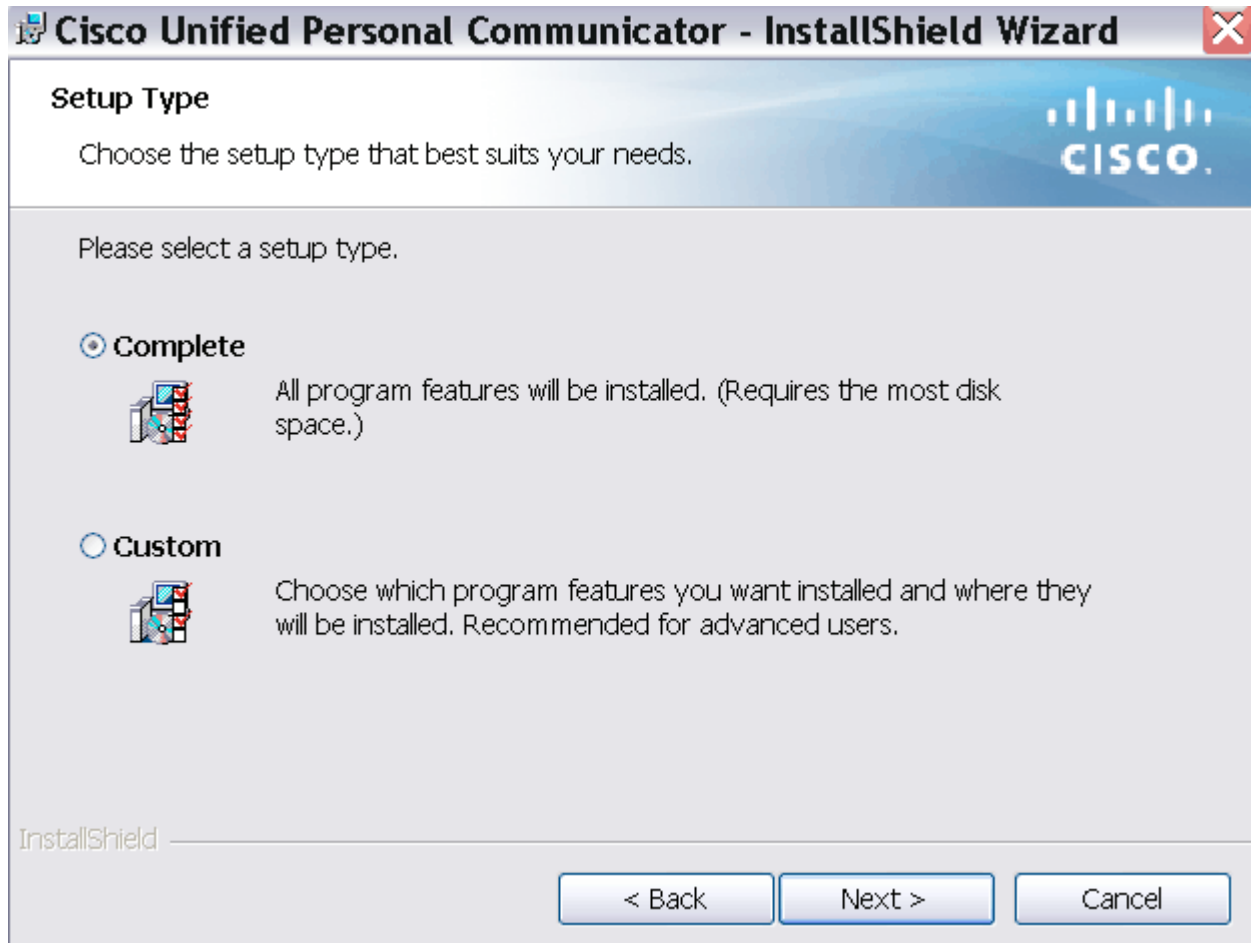
13. Please wait while the CUPC files install and decompress.



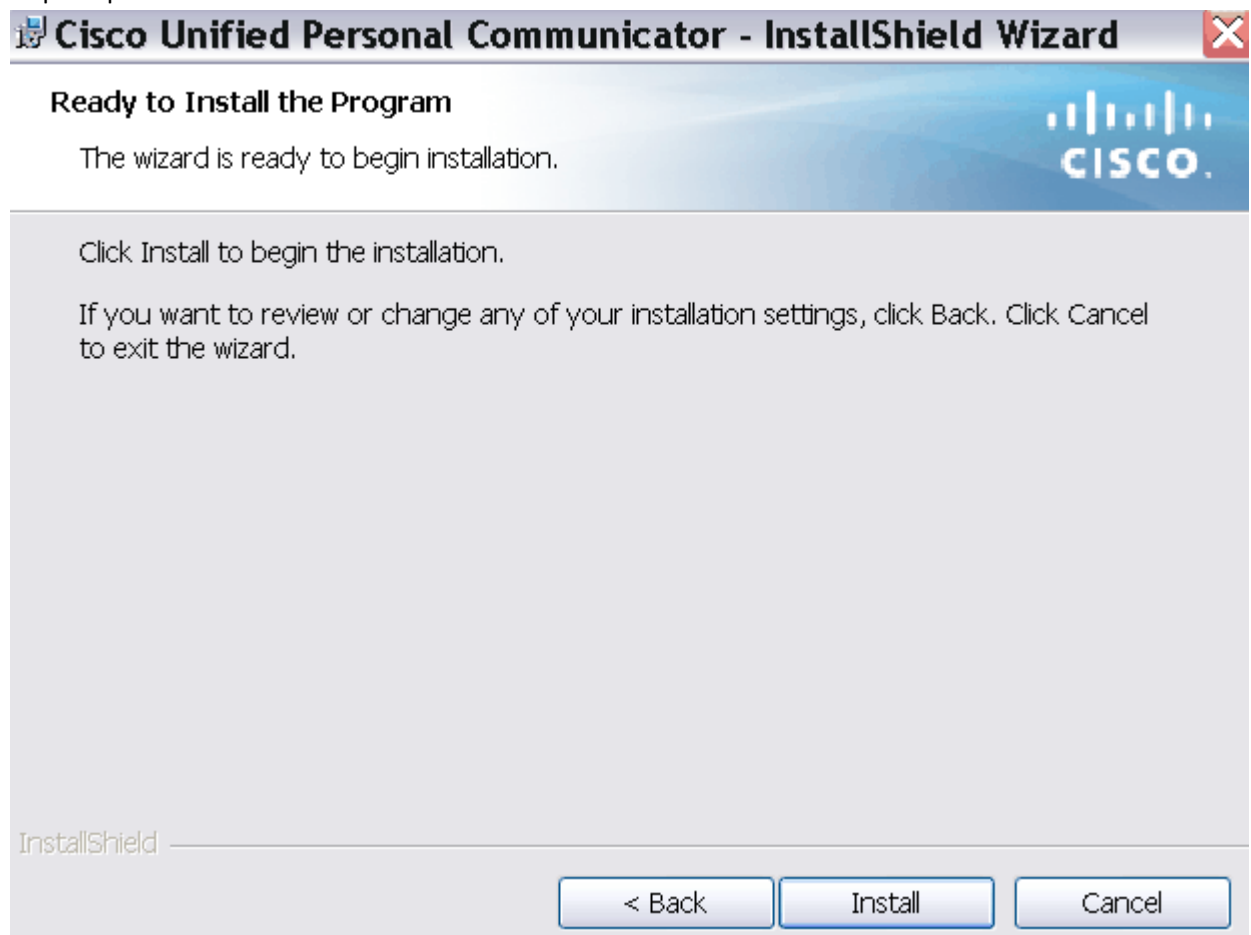
14. Click on “accept” to accept the license agreement. Then click next.



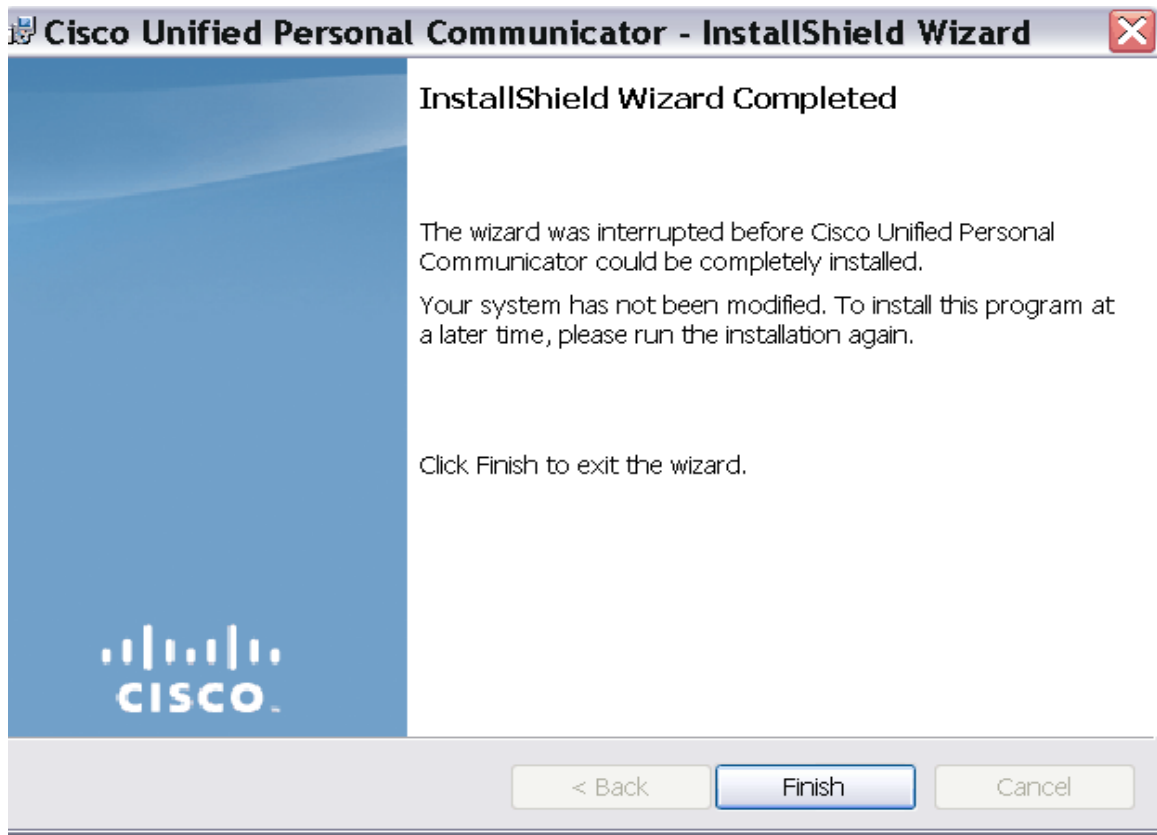
15. Please click on complete to install the full version of CUPC.



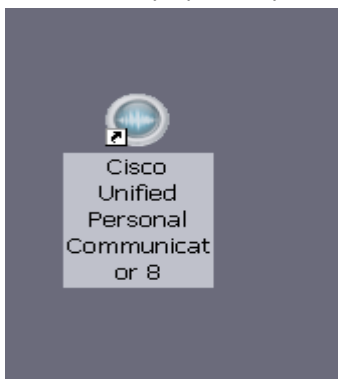
16. Click on install to install the CUPC program; if you haven't closed all other programs, you may be prompted to do so.



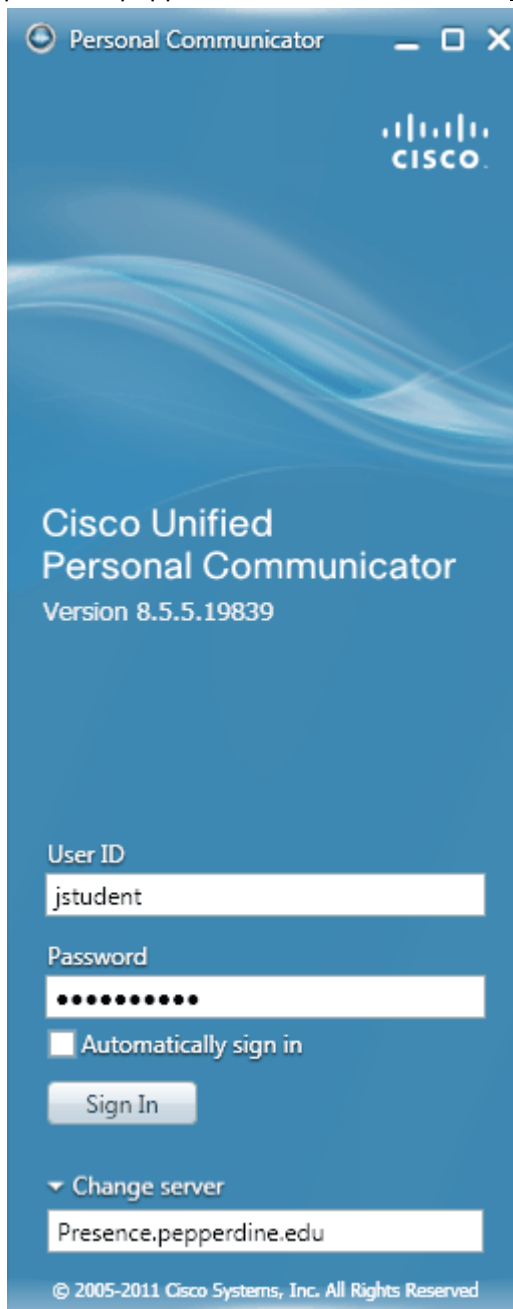
17. Click Finish:



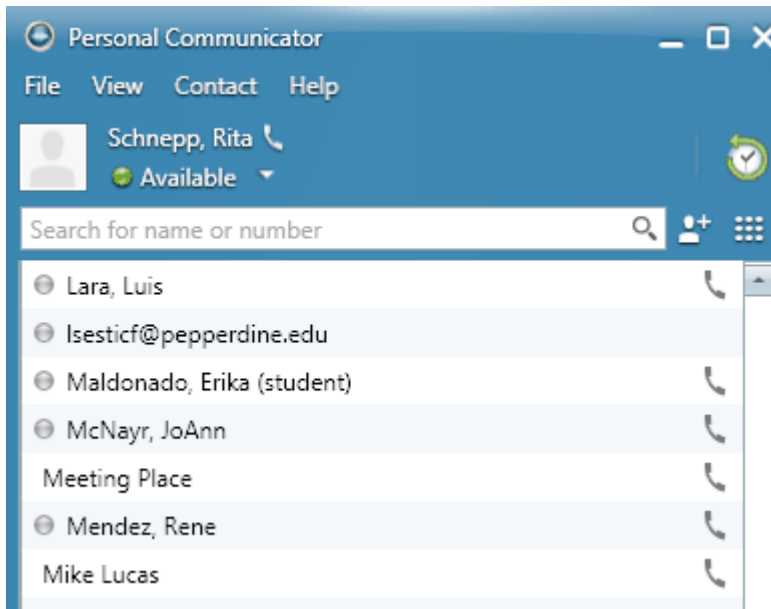
18. When the installation is completed, a Cisco CUPC icon will appear on your desktop. CUPC may automatically open or you may need to double-click on this icon.



19. At the CUPC configuration window please insert your Pepperdine userid and password. Click on “change server” and insert the name of our Presence server in the space as follows: presence.pepperdine.edu -- Then click on Sign In to launch CUPC.



20. Below is an example of a typical CUPC client contact list.



To view an informative video on Cisco CUPC 8.5 for Windows, go to the link below. Note that not all of the features shown in this video will be immediately available in our environment.

<http://www.youtube.com/watch?v=Lo2nN9xNhLg>