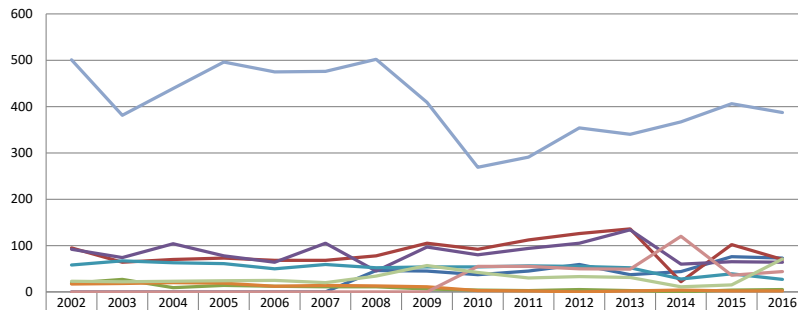
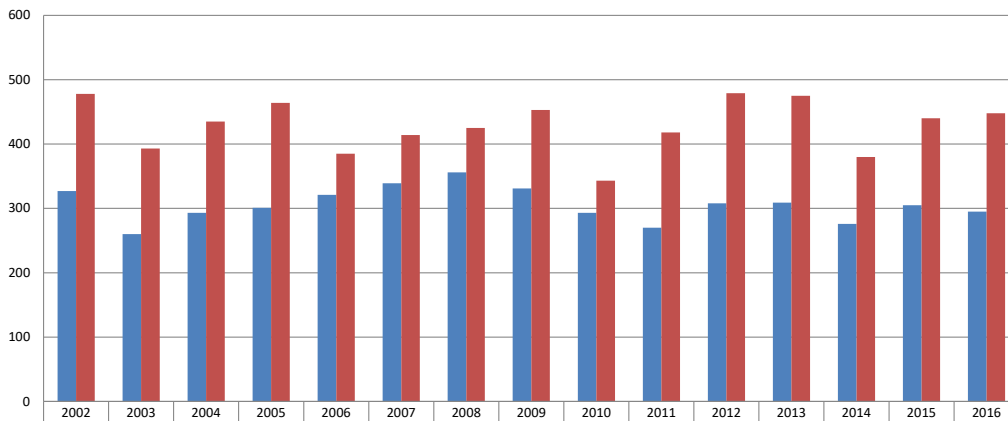


First Time Freshmen Race



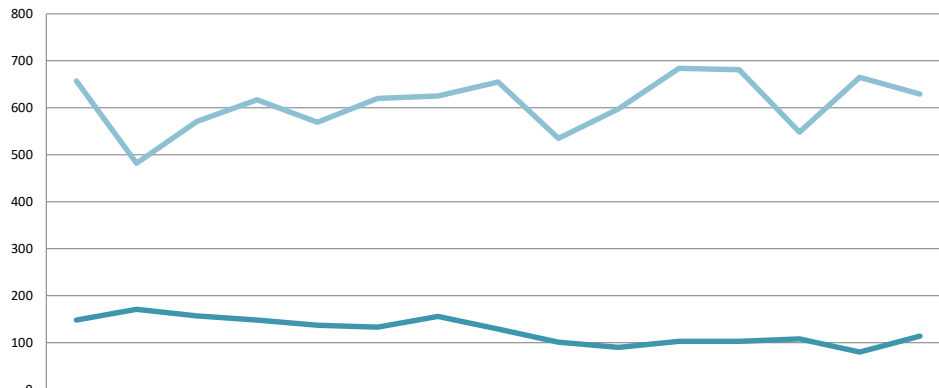
	2002	2003	2004	2005	2006	2007	2008	2009	2010	2011	2012	2013	2014	2015	2016
Non-resident alien	0	0	0	0	0	0	46	45	37	45	59	37	44	76	73
Hispanic or Latino	95	64	70	73	68	68	78	105	92	112	126	136	22	102	70
American Indian or Alaska Native	19	27	9	14	12	11	11	6	4	3	5	3	0	4	5
Asian	92	74	104	78	64	105	45	97	80	94	105	134	60	65	64
Black or African American	58	67	63	61	50	59	52	54	54	56	55	52	28	39	27
Native Hawaiian or Other Pacific Islander	17	18	20	19	12	14	13	11	3	2	0	2	4	2	2
White	501	381	439	496	475	476	502	409	269	291	354	340	367	406	387
Two or more Race	0	0	0	0	0	0	0	0	55	55	50	49	120	36	44
Race/ethnicity unknown	23	22	23	24	25	20	34	57	42	30	33	31	11	15	71

First Time Freshmen Gender



	2002	2003	2004	2005	2006	2007	2008	2009	2010	2011	2012	2013	2014	2015	2016
Male	327	260	293	301	321	339	356	331	293	270	308	309	276	305	295
Female	478	393	435	464	385	414	425	453	343	418	479	475	380	440	448

First Time Freshmen Religion



	2002	2003	2004	2005	2006	2007	2008	2009	2010	2011	2012	2013	2014	2015	2016
Church of Christ	148	171	157	148	137	133	156	129	101	90	103	103	108	80	114
Other Religion	657	482	571	617	569	620	625	655	535	598	684	681	548	665	629