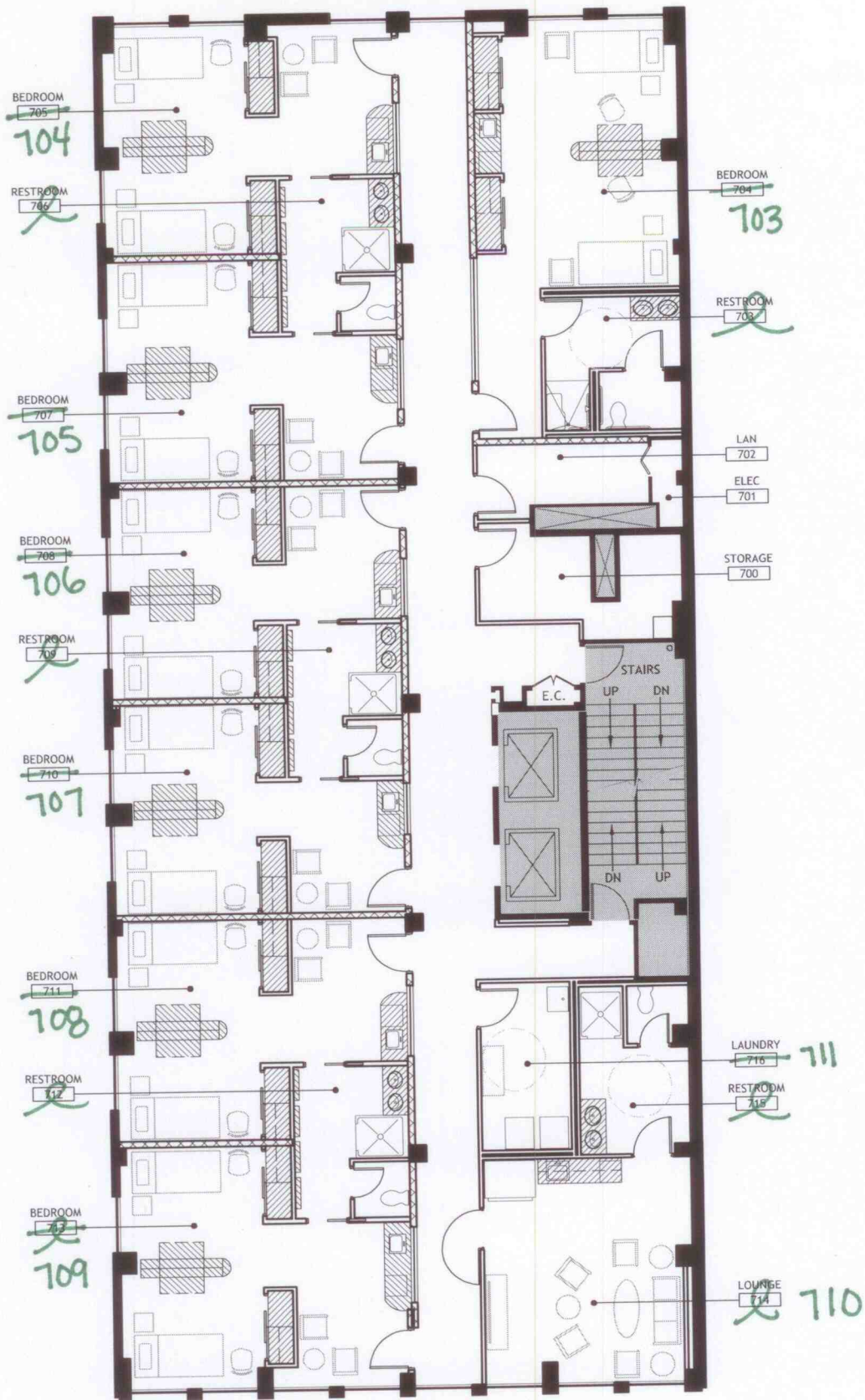


Drawing Title:  
 PEPPERDINE UNIVERSITY  
 2011 PENNSYLVANIA AVE., NW  
 8TH FLOOR - RESIDENTIAL SPACE PLAN

Scale: 1/8"=1'-0"  
 Date: 3 JUNE 2008  
 Project #: 10216.04

ARCHITECTS  
 © 2008 Fox Architects LLC. All rights reserved worldwide

8444 Westpark Drive Suite 120 McLean, Virginia 22102 Phone 703.821.7990 Fax 703.821.2270  
 1121 14th Street, NW 3rd Floor Washington, DC 20005 Phone 202.659.0929 Fax 202.659.0928



Drawing Title:

PEPPERDINE UNIVERSITY  
 2011 PENNSYLVANIA AVE., NW  
 7TH FLOOR - RESIDENTIAL SPACE PLAN

Scale: 1/8"=1'-0"  
 Date: 3.JUNE 2008  
 Project #: 10216.04



8444 Westpark Drive Suite 120 McLean, Virginia 22102 Phone 703.821.7990 Fax 703.821.2270  
 1121 14th Street, NW 3rd Floor Washington, DC 20005 Phone 202.659.0929 Fax 202.659.0928

