

# GET READY FOR TAKEOFF!



*Shanghai*

*Academic Year 2019-2020 Orientation*



# SESSION FACILITATOR



Previous Interim Director:  
**Corrie Zacharia**



# INTRODUCING



**Your Ambassador:  
Emily Tran**

**[emily.tran@pepperdine.edu](mailto:emily.tran@pepperdine.edu)**



# INTRODUCING



Faculty in Residence  
**Jennifer Akamine  
Phillips**





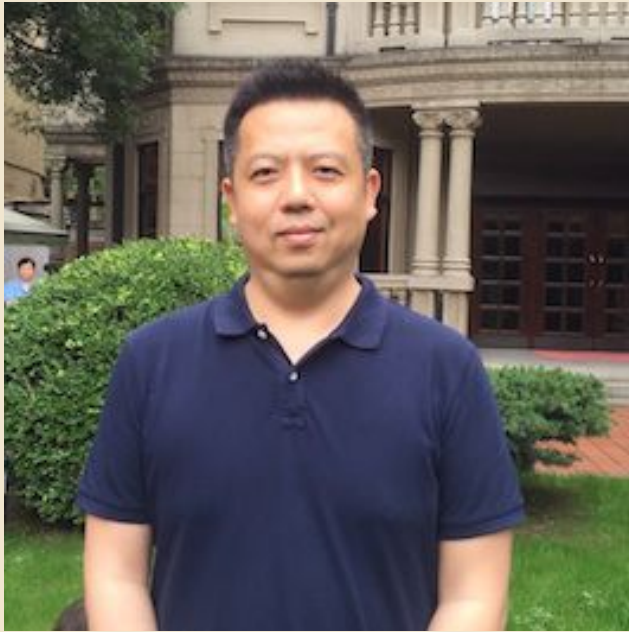
# PROGRAM STAFF



**Your Director:**  
**Charlie Engelmann**  
and the family



# THE STAFF



**Associate Director:**  
**William Wu**



# THE STAFF



**Program Coordinator:**  
**Gigi Zhang**



# THE STAFF



**Academic Assistant:  
Mona Chen**



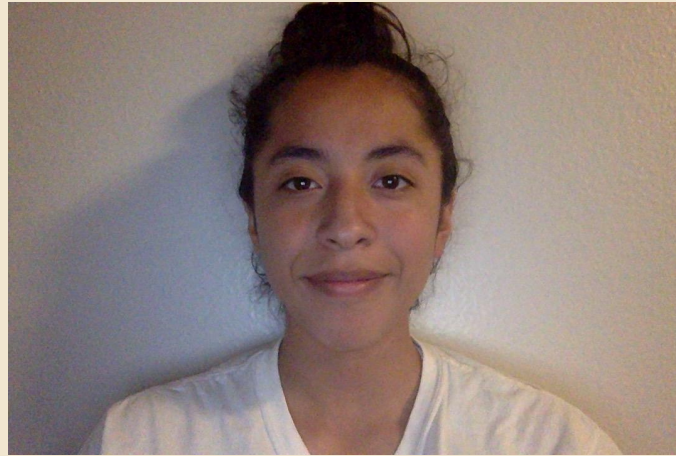


# INTRODUCING Your RA's

**MICHAEL KIM**



**FRANCIS MEJIA**



# PROGRAM VIDEO



<https://vimeo.com/307189857>



# Visas

- Your JW202, Fudan Acceptance Letter, and IP Entry Letters will be mailed to you this summer (likely June).
- You will apply for your visa in person at a Chinese Consulate.





# Nr. 66 Lane 532 Yuyuan Road



- 3 on-site classrooms
- 2-6 people per room
- Sunshine room!
- Convo room, 3rd story
- 2 laundry rooms
- Security guard and gate
- Air conditioning and heating
- 1 student kitchen
- Faculty apartment, 3rd story
- Jing'an District



# HOUSE TOUR VIDEO



<https://vimeo.com/316797597>





# ROOMS AND ROOMMATES

Everybody will pick a room out of a hat but room tickets may be traded

Housing situation depends on M/F ratio

- Whichever gender has fewer people lives in the house
- The house has up to 6 in a room, other housing is dorm-style



# SERVICE OPPORTUNITIES

- local trips to orphanages + community fundraising events + teaching english to children + volunteer at homeless relief shelters
- examples include:
  - *The Renewal Center*
  - *Old Town Shanghai*
  - <http://www.handsonshanghai.org/>



# MAILING TO SHANGHAI

**Nr.66 Lane 532 Yu Yuan Rd.**

**200040 Shanghai, P.R. China**

China's customs doesn't make this easy.

- Use FedEx/UPS to ship from U.S.
- Avoid shipping expensive/flashy items.
- Make joint shipments with with IP office when possible (documents, small items)
- DON'T write "Pepperdine University" on the mail



# MEALS

**Breakfast:** Monday-Friday, Chinese/western breakfast provided

**Lunch:** Digital Disbursement \$\$ to eat at local restaurants or buy groceries.

**Dinners:** Group dinners from local restaurants Monday-Thursday. Wednesday, dinner will be delivered to the Jia. Money for Friday's dinner is included in your disbursement.



# AWESOME YET BUDGET CONSCIOUS TRAVEL

*Get in groups of 3-4 and choose one of these 4 locations: Yangshuo, Beijing, Hangzhou, and Hong Kong. Your budget is \$200 per person for 2 days. Research the travel options, lodging, meals, & activity ideas within the budget for 4 people.*





# INFO HUNTING

Get out your phones and google 'pepperdine international programs'. Choose your destination and click on 'about'

- History of location
- Packing info
- Phone plan options
- Airport to facility directions
- Meals
- How to get around the city



# STUDENT EMPLOYMENT

## *student worker positions:*

- **Food Manager (4)** - rehired at semester, responsible for breakfast setup and Wed. Dinner setup
- **Office Assistant** - rehired at semester, clerical work in office,
- **Communications Specialist** - Newsletter
- **Media Coordinator** - Makes films and social media posts
- **Librarian** - Coordinates with Malibu campus to get resources and books
- **Student Volunteer Positions** - SLA, Service Coordinator

\$\$\$



# PHONES

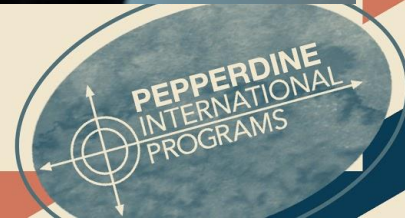
Chinese Sim Card

OR

Chinese Phone



Check with your carrier to see if they offer overseas plans



# APPS YOU NEED

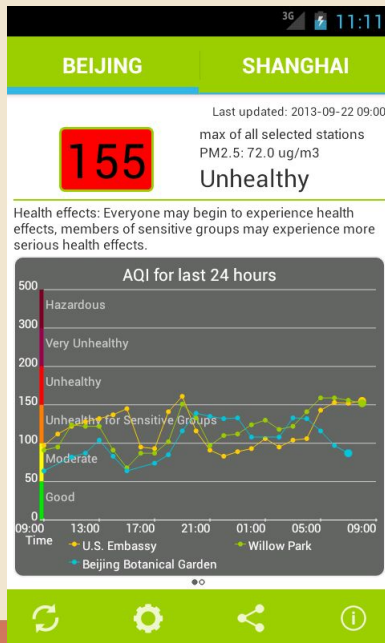
Pleco



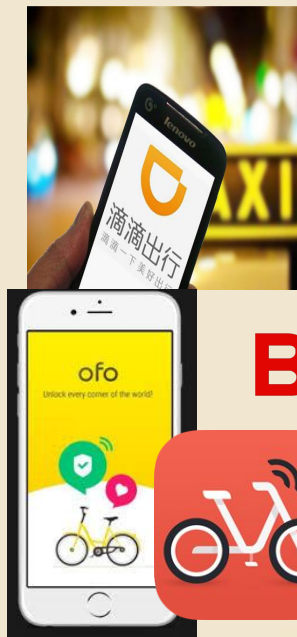
WeChat



Air Quality China



Didi/Ofo



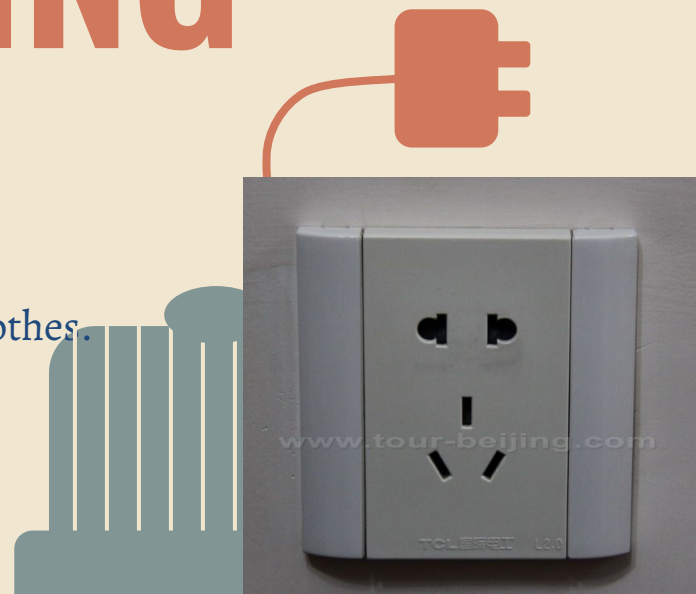
Baidu



# WHAT TO BRING

## *tips for packing:*

- AC converter for 220v/110v (if you're concerned)
- Special/Favorite hygiene products (female products)
- Clothes that MUST fit well e.g. Coats, pants, dress clothes.  
(Others are easy to find)
- Waterproof stuff. Expect rain.
- 8 months' supply medications
- Shoes: 1 pair sneakers, 1 dress, 1 pair boots
- Emergency U.S. currency. \$200 is more than enough
- E-reader/tablet/smartphone (kindle recommended)
- **DSLR or GoPro**





# WHAT NOT TO BRING

- If it's heavy, just don't. No appliances, etc.
- Avoid bringing clippers, curlers, straighteners
- Pillows/blankets/bedding
- Expensive jewelry or valuables
- That 2nd or 3rd. suitcase. You'll regret it.

*less  
is  
more!*



# TIME WITH ALUMNI

*Use your Orientation Worksheet  
for specific questions*



# COMMUNITY & COMMUNICATIONS

- VPN's, get one before you go

- Phone Cards

  - Program staff will help you buy these, less than \$20/month

- Skyping home

  - Time change can be difficult; at least 14-hour



# Money

- Easiest to withdraw money from ATM down street
- Can also make Chinese bank account and link it to your WeChat account
  - Takes about 2 hours
  - You need passport and a 200 kuai deposit
- Payment by phone is becoming bigger and bigger
- Budget consciously! Even though things may be cheap, it adds up



# CULTURE

- Less personal space
- More family-oriented
- May be louder, but less forward with strangers
- “Little Emperor Syndrome”





# WHERE DO YOU STAND?

- Every culture has norms and values.
- What are your norms and values?
- How do your norms/values compare to host culture? To your group?



# ACADEMICS

**DO NOT** expect overseas classes to be **EASY!**

- It's the same amount of class hours as Malibu finished in less time.
- 2.0 GPA requirement (cumulative and semester) before and during program.

Fudan is the world's #44th university in QS World (2019) & #3 in China

- Selected classes will be held once every Wednesday at Fudan

Classes still held 5 days a week at the Jia



# ACADEMICS

- Be ready for different teaching styles
  - Chinese professors may do things differently
- Have a growth mindset and learn how to learn in different ways
- Take initiative in talking with professors
- Be mindful of language barrier



# TEXTBOOKS

Typically, textbook information is available about a month before the program starts. You will be sent an email with the information about your textbooks.

However, textbook rentals are offered at the house in a limited supply...



# HEALTH & WELLNESS

- Will's Gym and Physical are the closest gyms
  - Physical Weightlifting class
- People run throughout the city
- Martial Arts class
- Cages is a cool place to play dodgeball/soccer/batting cages
- Workout classes throughout the city



# SPIRITUAL LIFE

<https://vimeo.com/268270608>

House Church  
Small Groups  
International Churches  
Spiritual Life Committee  
Convocation



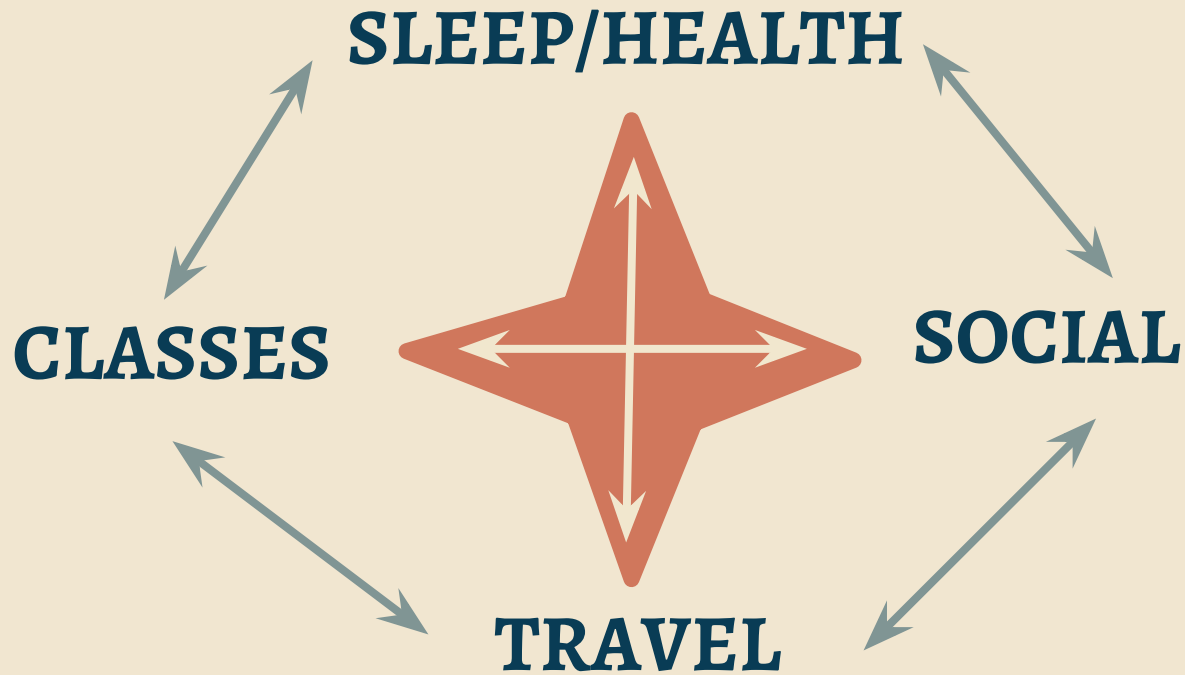


# TRAVEL

- Spring Airlines has the cheapest flights
- Trains are fast and affordable
  - Can buy tickets at the station
  - <https://www.travelchinaguide.com/china-trains/>
- China Highlights is great for travel within China



# BALANCE ACTIVITY



# EXPLORE WITH PURPOSE!

## *Develop goals for yourself:*

- Take 5 minutes to draft at least 3 goals for yourself
- Get into groups of 3-4 people and share your developmental goals & how you will achieve them



# NOTE TO YOUR FUTURE SELF

**Using the pen, paper and envelope provided, write yourself a letter that you will open while you are abroad.**

**Consider including the following:**

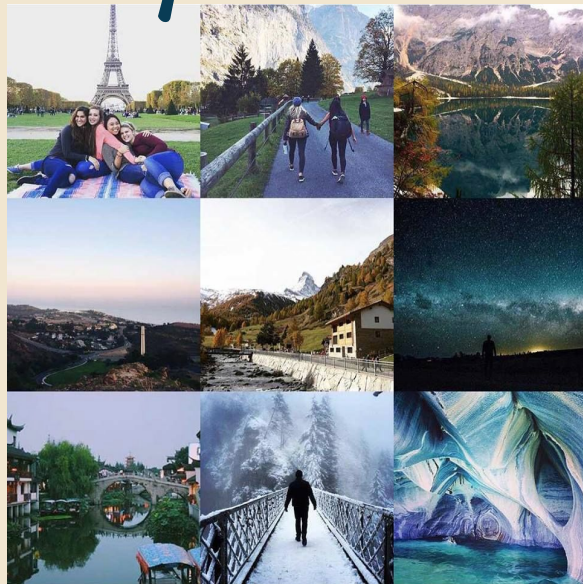
- **Goals:** spiritual growth, personal growth, academic growth, etc.
- **A statement on your current stage in life.** You will be amazed how much can change in a year!
- **Your hopes:** You will be reading this letter at this time next year ... what do you want to get out of your time abroad?

**Your RAs will hold on to these during your year abroad.**



# STAY CONNECTED

*share your adventures.*



@pepperdineip

@shanghai\_pepperdine

[pepperdineshanghai.wordpress.com](http://pepperdineshanghai.wordpress.com)





再见!  
一路平安

